



*jordanfishwick*

56 Davenport Avenue, M20 3ET  
£2,708 Per Calendar Month





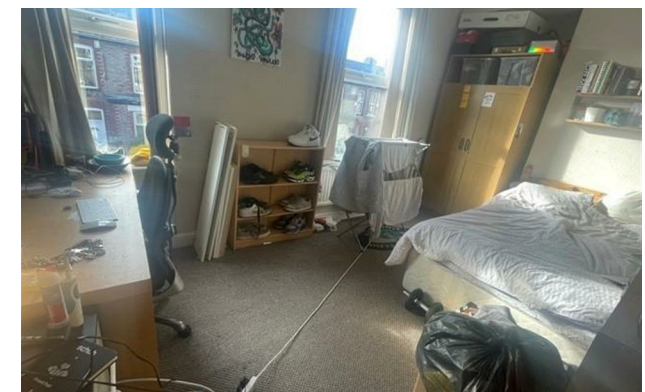
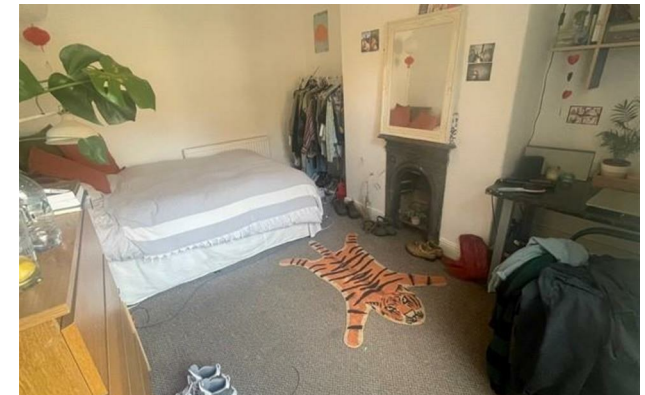
### The Property

View our Virtual Tour Here: <https://youtu.be/MIIxTOHTedc>

\*\*\* AVAILABLE 1ST JULY 2025 \*\*\* £125.00 PPPW \*\*\* STUDENT PROPERTY \*\*\* BILLS PACKAGE AVAILABLE \*\*\* An amazing 5 double bedroom property! A student home to be proud of for the academic year 2025/26. The house offers modern well fitted accommodation throughout and is furnished to a high standard. Five Double Bedrooms, Two Bathrooms. Fitted Kitchen. Rear Yard. Warmed by gas central heating. Half rent July only.

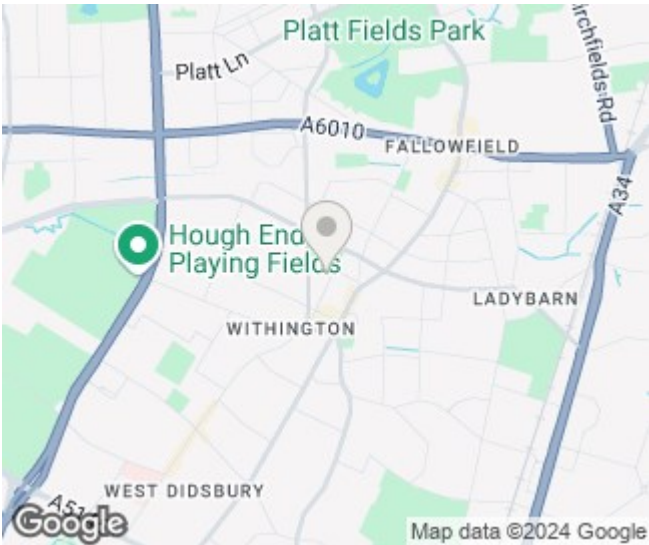
EPC Rating - D


**Davenport Avenue  
Withington M20 3ET**  
**£2,708 Per Calendar Month**





- Available July 2025
- £125.00 PPPW
- Five Double Bedrooms
- Two Bathrooms
- Fully Furnished
- Rear Yard
- Fantastic Location
- Council Tax Band B
- EPC Rating D



Energy Efficiency Rating		
	Current	Potential
Very energy efficient - lower running costs		
(92 plus) <b>A</b>		<b>81</b>
(81-91) <b>B</b>		
(69-80) <b>C</b>		
(55-68) <b>D</b>	<b>58</b>	
(39-54) <b>E</b>		
(21-38) <b>F</b>		
(1-20) <b>G</b>		
Not energy efficient - higher running costs		
<b>England &amp; Wales</b>		EU Directive 2002/91/EC 





These particulars are believed to be accurate but they are not guaranteed and do not form a contract. Neither Jordan Fishwick nor the vendor or lessor accept any responsibility in respect of these particulars, which are not intended to be statements or representations of fact and any intending purchaser or lessee must satisfy himself by inspection or otherwise as to the correctness of each of the statements contained in these particulars. Any floorplans on this brochure are for illustrative purposes only and are not necessarily to scale.

Offices at: Offices at Chorlton, Didsbury, Disley, Hale, Glossop, Macclesfield, Manchester Deansgate, Manchester Whitworth Street, New Mills, Sale, Wilmslow and Withington